

(S)7t

BLACK EDITION

THE ART OF EMOTIONAL
CONNECTION AND DISCOVERY
THROUGH PERCEPTUAL LISTENING®



(S)7t

BLACK EDITION



A FORMIDABLE SONIC MASTERPIECE

THE S7T BLACK EDITION IS A FORMIDABLE SONIC MASTERPIECE THAT IS AS MUCH A SCULPTURE AS IT IS AUDIO BLISS - IT'S THE HEIGHT OF PERLISTEN AUDIO ENGINEERING TO DATE.

The S7t Black Edition offers the same exceptional sonic performance as the original S7t Limited Edition, but with several enhancements. It features massive aluminum side panels that elevate its design to a striking architectural level while adding mass. The internal cabinet volume has been increased, and Perlisten has applied its engineering expertise to create high-performance isolation feet.

The updated design incorporates woofers that provide greater linear excursion, decreased inductance, and improved low-frequency performance. The DPC array maintains the current drive units and pattern control while integrating all three transducers with a large aluminum heatsink. The crossovers have been fine-tuned, and the overall design enhances power handling while significantly reducing thermal compression.

UPDATED CABINET WITH ALUMINIUM SIDE PANNELS

THE ORIGINAL S7T'S CABINET STRUCTURE HAS BEEN SIGNIFICANTLY ENHANCED WITH THE ADDITION OF ALUMINUM SIDE PANELS. **THESE PANELS NOT ONLY ADD MASS TO THE S7T BLACK EDITION BUT ALSO BRING A HOST OF BENEFITS, INCLUDING IMPROVED DAMPING AND A SLEEK, MODERN AESTHETIC.**

The S7t Black Edition, with its robust aluminum construction and stunning architectural design, is a testament to the perfect marriage of art and acoustics. This unique combination

not only enhances the speaker's volume and clean look but also delivers more woofer excursion and Perlisten's top performance to date.



OVERVIEW



CNC Milled
DPC

Improved
Woofer

Perlisten
proprietary
feets

Carbon fiber
cabinet panels

Re-designed
crossover

Engineered
in USA

TPCD

Convection cooling

Copper shorting ring

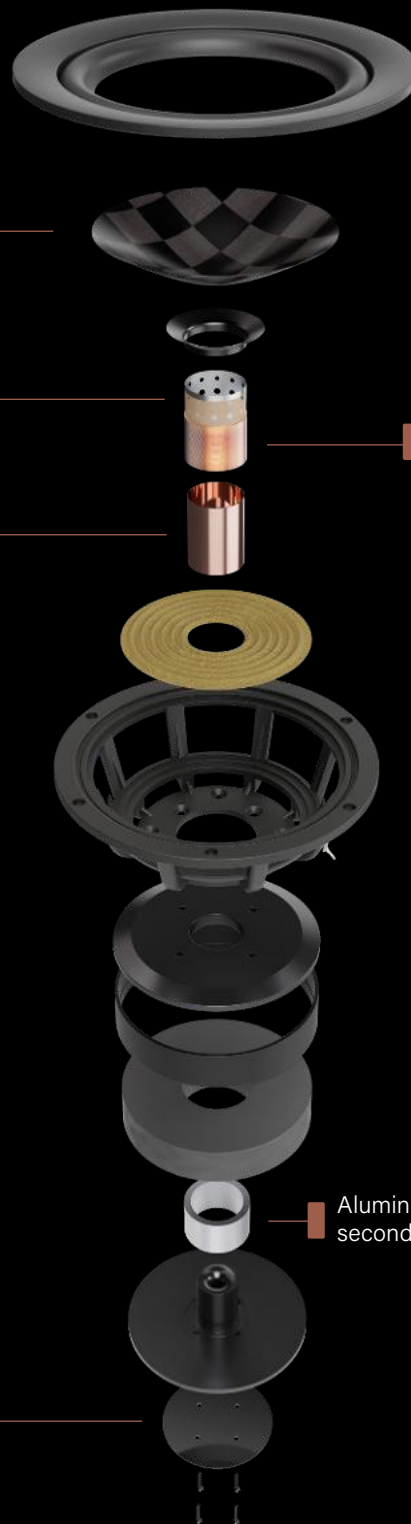
Longer windings,
lower inductance

IMPROVED WOOFER FEATURING TEXTREME

THIN PLY CARBON
DIAPHRAGM

Black anodized heat zink

Aluminum heatsink,
secondary shorting ring



CNC MILLED DPC

Grill Screen



Billit machined Aluminum DPC waveguide



Beryllium Diaphragm

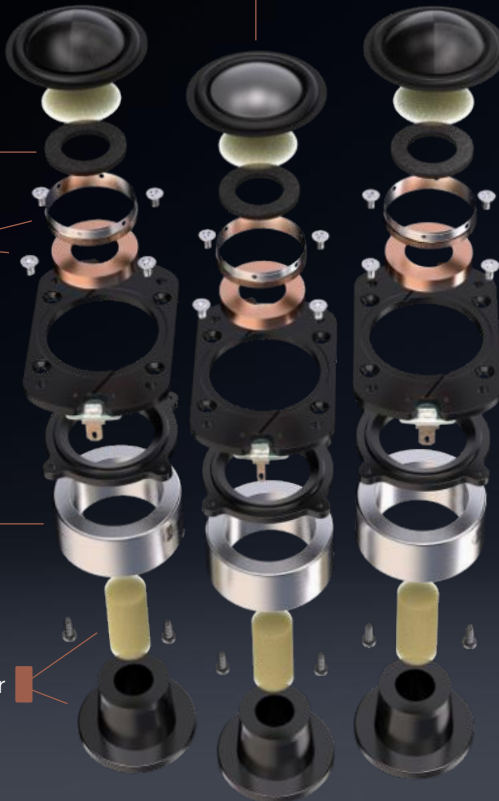
TPCD Diaphragm

Beryllium Diaphragm

Dual shorting rings

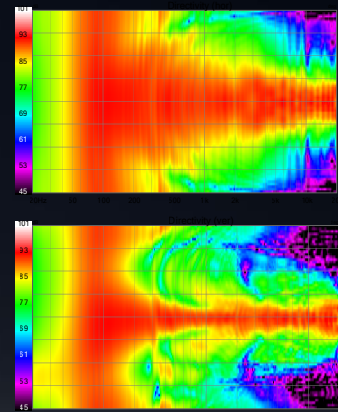
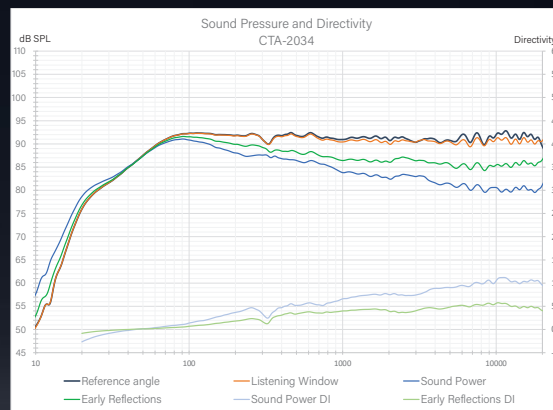
Neodymium magnet

Anti-resonance chamber



TECHNICAL SPECIFICATIONS

Enclosure Alignment	4-way bass reflex / acoustic suspension
Driver complement	DPC Array: 28mm Beryllium 28mm(2) Textreme TPCD Woofers: 180mm(4) Textreme TPCD
Sensitivity	91.4dB / 2.83v / 1.0m
Impedance	4Ω nominal / 3.2Ω min
Response Linearity	80 - 20kHz +/-1.5dB window
Frequency Response (-10dB)	bass reflex: 22 - 37kHz acoustic suspension: 32 - 37kHz
Typical In Room bass extension	bass reflex: 16Hz acoustic suspension: 23Hz
Dimensions (HxWxD)	1332.5 x 365.0 x 475.8mm 52.5 x 14.4 x 18.7"
Weight	112.3kg (247.0 lbs.)
Recommended Amplifier Power	100 - 600W RMS
SPL capability (100-20kHz)	119.4dB peak 117dB peak <2% - 2nd, 3rd Harmonics
Available finishes	satin black anodized aluminum



YOU WERE ONCE SONICALLY LOST
NOW YOU HAVE BEEN FOUND®



PERLISTENAUDIO.COM