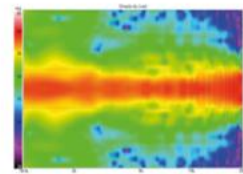
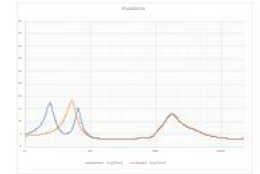


Horizontal Directivity



Vertical Directivity



Impedance

## MODEL S5M



## TECHNICAL SPECIFICATIONS



Sharing technologies and drivers from the flagship S7t. When the highest fidelity is what matters most. Featuring our proprietary DPC-Array controlling Mid/High frequencies, centered by our finest 28mm Beryllium dome and dual 28mm TPCD ultra-lightweight domes. All transducers are developed ground up by our engineers – bringing decades of research, culminating in this world class design. We teamed up with companies in the USA and Sweden to bring modern material science to hi-fi. Utilizing advanced Comsol acoustical modeling, our DPC-array is the result of 18 months of painstaking simulations and prototyping. The result is one of the most technologically advanced loudspeakers available. This new tweeter/waveguide DPC-Array delivers amazing accuracy, smoothness, and directivity control to handle the critical vocal range and delicate treble. All S-Series speakers share the same DPC-Array and benefit from our unique timbre matching technique across the entire series. Custom bass drivers made from thin-ply carbon diaphragms (TPCD) can be configured as bass reflex or acoustic suspension and adjusted for listener preference. Unparalleled dynamic range, low distortion and musical finesse. The PerListen S-Series speakers also have the distinguished honor to be the world's first and only loudspeakers to be certified for THX Dominus - their highest rating. A mark of achievement.

### BASIC

**Dimensions (HxWxD) without stand**  
600 x 240 x 400mm  
23.6 x 9.5 x 15.7"

**Weight**  
19.0 kg (41.8 lbs.)

**Available finishes**  
Piano black, Gloss white  
Custom finishes available

### TECHNICAL

**Enclosure Alignment**  
3-way bass reflex / acoustic suspension

**Driver complement**  
DPC-Array: 28mm Beryllium  
28mm(2) Textreme TPCD  
Woofers: 180mm(2) Textreme TPCD

**Sensitivity**  
89.6dB / 2.83v / 1.0m

**Impedance**  
4Ω nominal / 3.0Ω min

**Response Linearity**  
80 - 20kHz +/-1.5dB window

**Frequency Response (-10dB)**  
Bass reflex: 35 - 37kHz  
Acoustic suspension: 41 - 37kHz

**Typical In Room bass extension**  
Bass reflex: 29Hz  
Acoustic suspension: 32Hz

**Recommended Amplifier Power**  
100 - 300W RMS

**SPL capability @1m (100-20kHz)**  
114.4dB peak  
117dB peak <2% - 2nd, 3rd Harmonics

**Certification**  
THX Dominus, THX Ultra



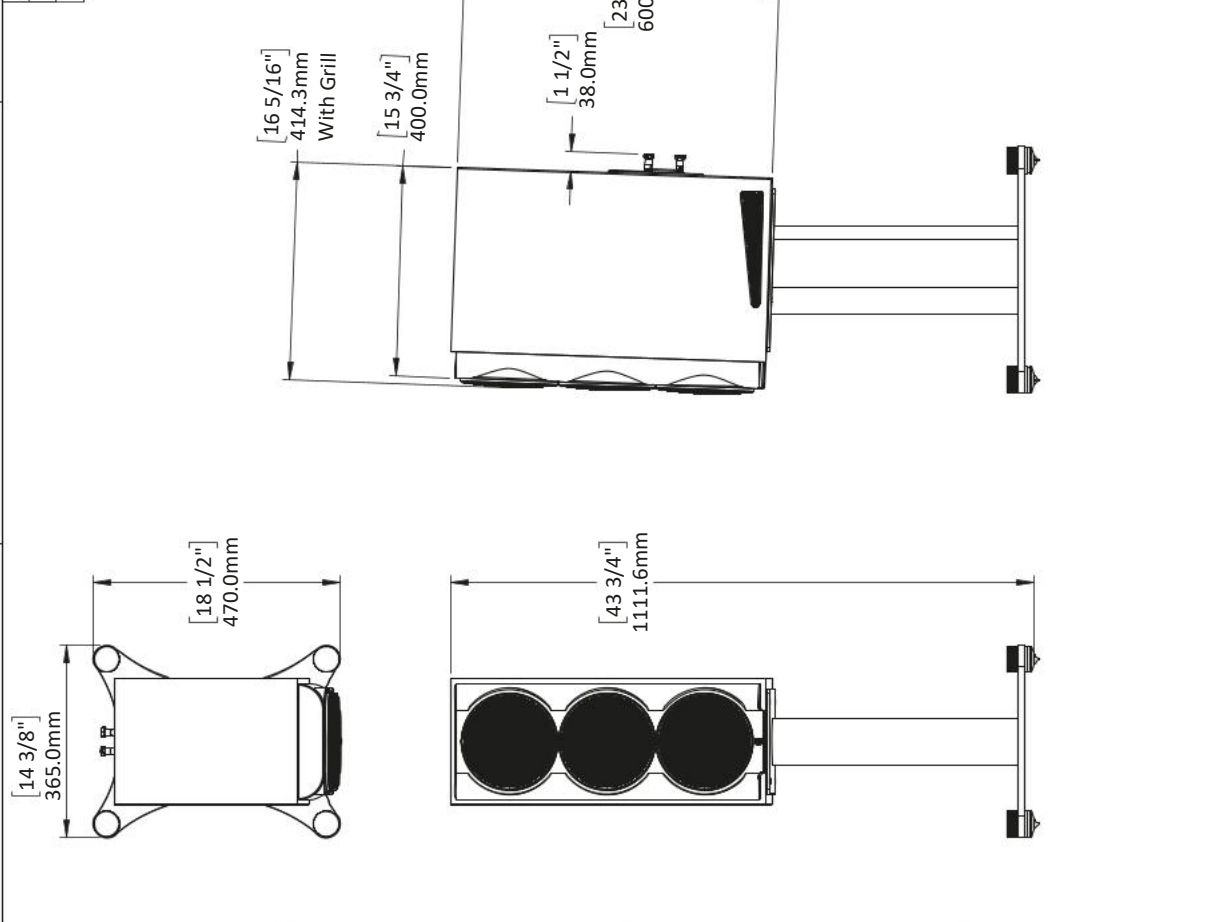
**DPC-Array**  
Directivity pattern control  
\*USA Patent pending



**HPF (Hybrid Pulp Formulation)**  
Diaphragms made from mixed long fiber hardwood, bamboo and wool

4 3 2 1

REVISIONS		DATE
REV.	DESCRIPTION	
1	Initial Release	6/30/21



D C B A

**PROPRIETARY AND CONFIDENTIAL**  
 THE INFORMATION CONTAINED IN THIS DRAWING IS THE SOLE PROPERTY OF PERLISTEN AUDIO, LLC. ANY REPRODUCTION OR TRANSMISSION OF THIS DRAWING WITHOUT THE WRITTEN PERMISSION OF PERLISTEN AUDIO, LLC IS PROHIBITED.  
 DRAWN BY: AER/ML/WATERS  
 CHECKED BY: J. B. WARD

NAME	DATE	 <small>PERLISTEN AUDIO, LLC</small>
TITLE:	Sheet 11	
SIZE	DWG. NO.	
<b>A</b>	<b>PERLISTEN-S55m_Architectural</b>	REV <b>1</b>
SCALE: 1:12		SHEET 1 OF 1

2 1