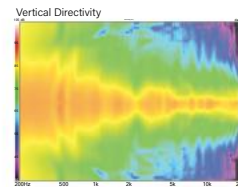
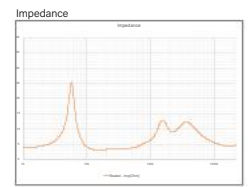


Horizontal Directivity



Vertical Directivity



Impedance

## MODEL S5c



## TECHNICAL SPECIFICATIONS



Smaller sibling to our S7c. The S5c is designed for applications requiring somewhat smaller center channel. Featuring our proprietary DPC-Array controlling Mid/High frequencies, centered by our finest 28mm Beryllium dome and dual 28mm TPCD ultra-lightweight domes. All transducers are developed ground up by our engineers – bringing decades of research, culminating in this world class design. We teamed up with companies in the USA and Sweden to bring modern material science to hi-fi. Utilizing advanced Comsol acoustical modeling, our DPC-array is the result of 18 months of painstaking simulations and prototyping. The result is one of the most technologically advanced loudspeakers available. This new tweeter/waveguide DPC-Array delivers amazing accuracy, smoothness, and directivity control to handle the critical vocal range and delicate treble. All S-Series speakers share the same DPC-Array and benefit from our unique timbre matching technique across the entire series. Custom bass drivers made from thin-ply carbon diaphragms (TPCD) used here in a compact acoustic suspension enclosure for predictable low frequency performance ideally suited for multi-channel systems.

### BASIC

**Dimensions (HxWxD)**  
4240 x 596 x 300mm  
19.5 x 23.5 x 11.8"

**Weight**  
21.4 kg (47.1 lbs.)

**Available finishes**  
Piano Gloss Black, White  
Special Edition Veneers

### TECHNICAL

**Enclosure Alignment**  
3-way acoustic suspension

**Driver complement**  
DCP-Array: 28mm(3) Beryllium  
28mm(2) Textreme TPCD  
Woofers: 180mm(2) Textreme TPCD

**Sensitivity (2pi)**  
88.8dB / 2.83v / 1.0m

**Impedance**  
4Ω nominal / 3.2Ω min

**Response Linearity**  
80 - 20kHz +/-1.5dB window

**Frequency Response (-10dB)**  
Acoustic suspension: 42 - 34kHz

**Typical In Room bass extension**  
Acoustic suspension: 33Hz

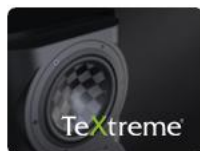
**Recommended Amplifier Power**  
100 - 300W RMS

**SPL capability @1m (100-20kHz)**  
113.6dB peak  
111.0dB peak <3% - 2nd, 3rd Harmonics

**Certification**  
THX Dominus, THX Ultra

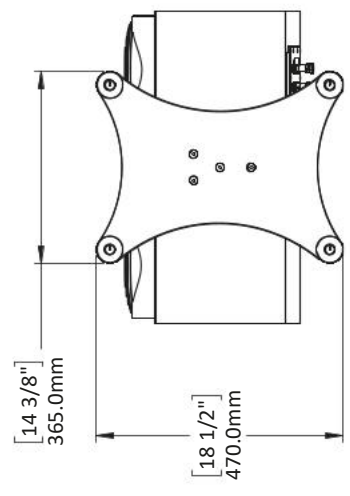
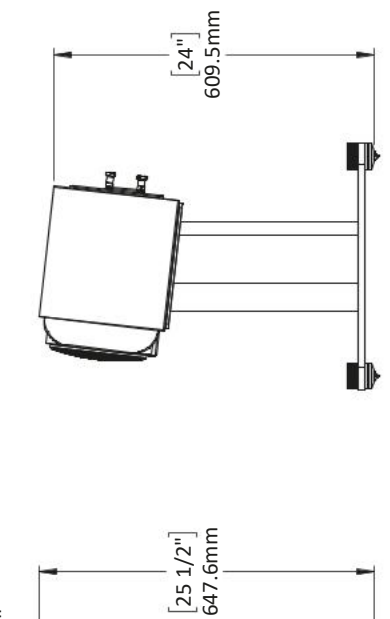
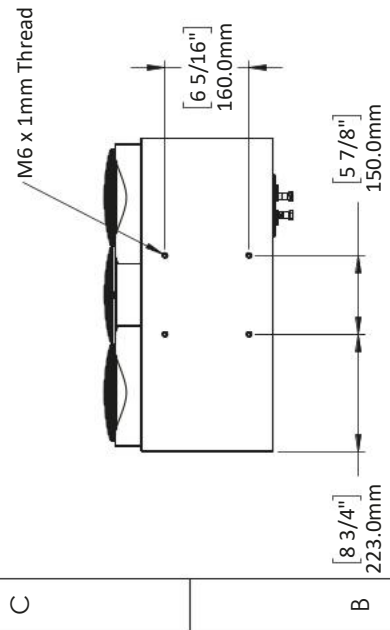
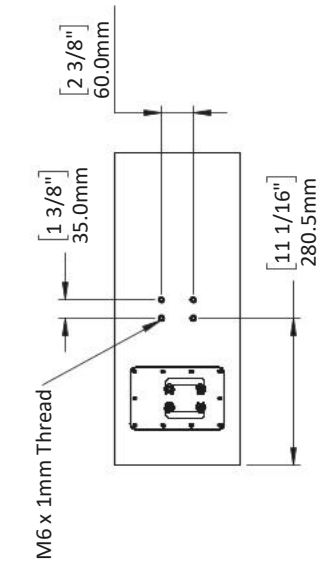
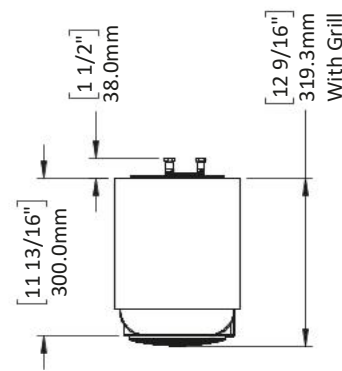
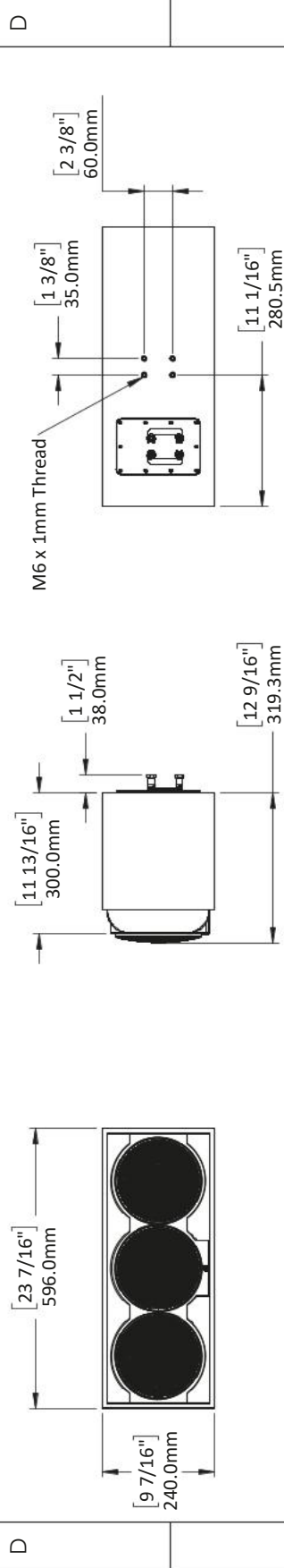


**DPC-Array**  
Directivity pattern control  
\*USA Patent pending



**TPCD**  
Thin Ply Carbon Diaphragms

REVISIONS		DATE
REV.	DESCRIPTION	
1	Initial Release	1/10/2022



NAME	DATE	
TITLE:		PERLISTEN <small>PERLISTEN AUDIO, LLC</small>
Sheet 1		
SIZE	DWG. NO.	REV
A	PERLISTEN-S5c_Architectural	1
SCALE: 1:12		SHEET 1 OF 1

**PROPRIETARY AND CONFIDENTIAL**  
 THE INFORMATION CONTAINED IN THIS DRAWING IS THE SOLE PROPERTY OF PERLISTEN AUDIO, LLC. ANY REPRODUCTION OR TRANSMISSION OF THIS DRAWING WITHOUT THE WRITTEN PERMISSION OF PERLISTEN AUDIO, LLC IS PROHIBITED.  
DATE PLOTTED: 01/10/2022 10:00:00 AM