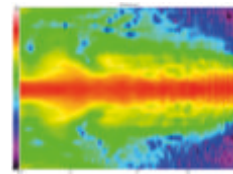
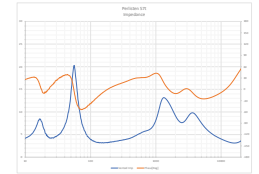


Horizontal Directivity



Vertical Directivity



Impedance

## MODEL S7t



## TECHNICAL SPECIFICATIONS



Our most advanced speaker to date. When the highest fidelity is what matters most. Featuring our proprietary DPC-Array controlling Mid/High frequencies, centered by our finest 28mm Beryllium dome and dual 28mm TPCD ultra-lightweight domes. All transducers are developed ground up by our engineers – bringing decades of research, culminating in this world class design. We teamed up with companies in the USA and Sweden to bring modern material science to hi-fi. Utilizing advanced Comsol acoustical modeling, our DPC-array is the result of 18 months of painstaking simulations and prototyping. The result is one of the most technologically advanced loudspeakers available. This new tweeter/waveguide DPC-Array delivers amazing accuracy, smoothness, and directivity control to handle the critical vocal range and delicate treble. All S-Series speakers share the same DPC-Array and benefit from our unique timbre matching technique across the entire series. Custom bass drivers made from thin-ply carbon diaphragms (TPCD) can be configured as bass reflex or acoustic suspension and adjusted for listener preference. True full range performance with unparalleled dynamic range and musical finesse. The PerListen S-Series speakers also have the distinguished honor to be the world's first and only loudspeakers to be certified for THX Dominus - their highest rating. A mark of achievement.

### BASIC

**Dimensions (HxWxD)**  
1295 x 240 x 400mm  
51.0 x 9.5 x 15.7"

**Weight**  
55.7 kg (122.5 lbs.)

**Available finishes**  
Piano black, Gloss white  
Special Edition Veneers

### TECHNICAL

**Enclosure Alignment**  
4-way bass reflex / acoustic suspension

**Driver complement**  
DPC-Array: 28mm Beryllium  
28mm(2) Textreme TPCD  
Woofers: 180mm(4) Textreme TPCD

**Sensitivity**  
92.2dB / 2.83v / 1.0m

**Impedance**  
4Ω nominal / 3.2Ω min

**Response Linearity**  
80 - 20kHz +/-1.5dB window

**Frequency Response (-10dB)**  
Bass reflex: 22 - 37kHz  
Acoustic suspension: 32 - 37kHz

**Typical In Room bass extension**  
Bass reflex: 16Hz  
Acoustic suspension: 23Hz

**Recommended Amplifier Power**  
100 - 600W RMS

**SPL capability (100-20kHz)**  
120.0dB peak  
117dB peak <2% - 2nd, 3rd Harmonics

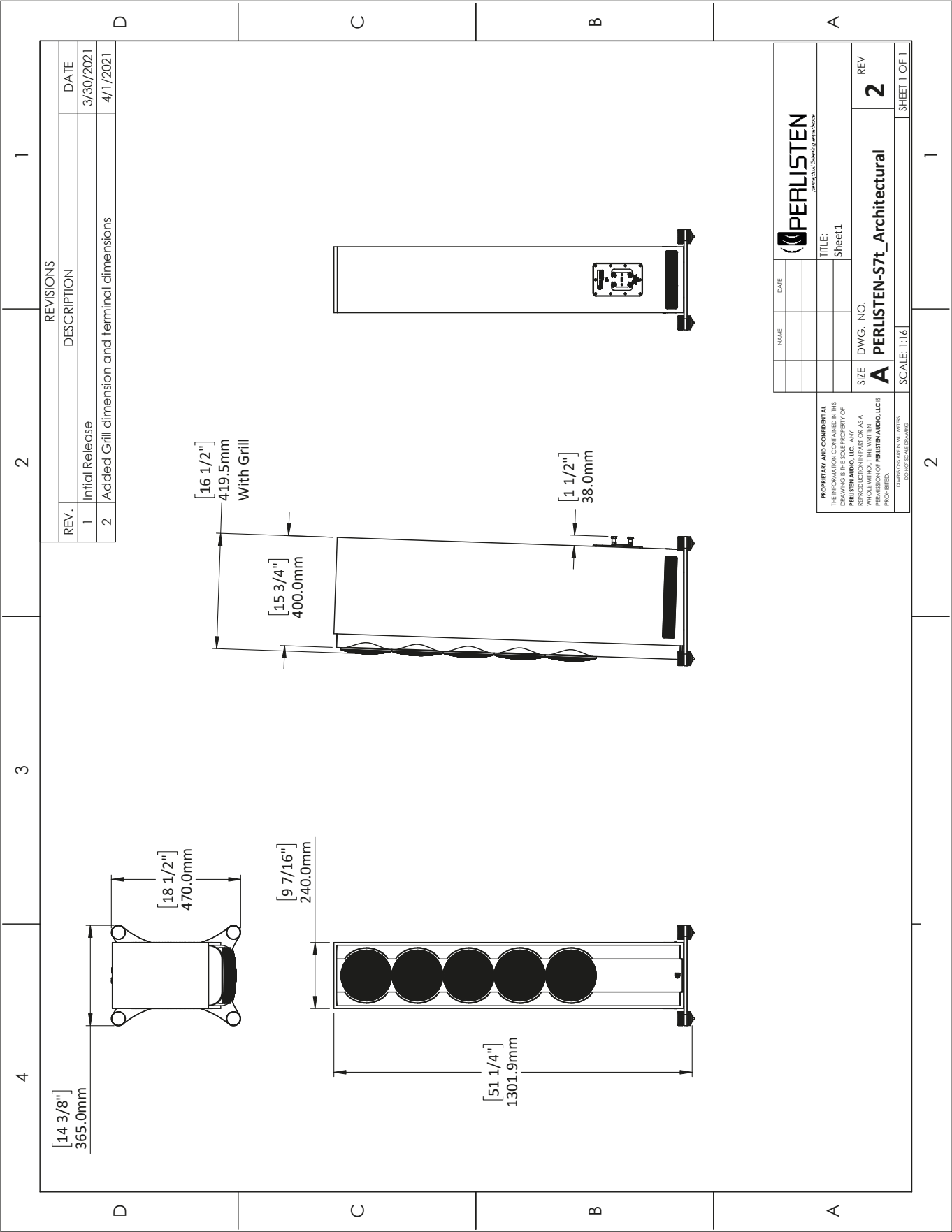
**Certification**  
THX Dominus



**DPC-Array**  
Directivity pattern control  
\*USA Patent pending



**TPCD**  
Thin Ply Carbon Diaphragms



REVISIONS		
REV.	DESCRIPTION	DATE
1	Initial Release	3/30/2021
2	Added Grill dimension and terminal dimensions	4/1/2021

NAME	DATE	 <small>PERLISTEN</small> <small>PERLISTEN AUDIO, LLC</small>
TITLE:		<small>PERLISTEN AUDIO, LLC</small> <small>PERLISTEN AUDIO, LLC</small> <small>PERMISSION OF PERLISTEN AUDIO, LLC IS</small> <small>PROHIBITED.</small> <small>DRAWINGS ARE IN MILLIMETERS</small> <small>UNLESS OTHERWISE NOTED</small>
Sheet1		
SIZE	DWG. NO.	REV
A	PERLISTEN-S7t_Architectural	2
SCALE: 1:16		SHEET 1 OF 1